

Pro16 Digital Snake and Audio Distribution at Revival Tabernacle



Revival Tabernacle's new sanctuary

APPLICATIONS

Digital Snake and Monitor Mixing

MARKET SEGMENT

House of Worship

LOCATION

West Milton, PA

PRODUCT LINE

Pro16®

PRODUCTS

- 3 AN-16/i-M Mic Input Modules
- 2 AN-16/i Input Modules
- 4 AN-16/o Output Modules
- 2 AN-16SBR System Bridges
- 2 A-16D Pro A-Net Distributors
- 8 A-16II Personal Mixers
- 2 A-16R Personal Mixers
- 2 A-16CS Personal Mixers
- 4 AV-P2 Output Modules

TESTIMONIAL

"It's really a very solid system and we have not had one problem in the years that we've been installing it. Take the piece, set it, plug it in, do a few adjustments, and you're set to go."

Brian Christ
Systems Designer, Sonic Art, LLC

INSTALLATION DETAILS

For Revival Tabernacle's new sanctuary in West Milton, PA, systems designer Brian Christ of Sonic Art, LLC, specified a Pro16® Aviom digital snake to connect stage to front of house and to distribute audio throughout the sanctuary.

Christ chose Aviom because it is simple to install and flexible without a complex interface. With the Aviom system, Christ met the church's audio fidelity requirements and saved the church and his team time and money on installation.

An analog system would have required three to four days of pulling wire. Instead, Christ says, "With the Aviom system we only pull a few lines back from the floor pockets to a patch bay and from the patch bay there's one Cat-5 that runs back to the main mixing location. So you're talking about pulling one run of copper 150 feet as opposed to 45 runs of copper 150 feet, and the cost savings on that is tremendous on both ends."

Six floor pockets on stage provide the flexibility the church required, without requiring that users reprogram to reconfigure. Each pocket includes RJ45 connection points for both stage inputs (from three AN-16/i-M Mic Input Modules) and returns to Aviom Personal Mixers for monitors. The floor pocket jacks run to an RJ45 patchbay, where inputs and returns are patched

FEATURES AND BENEFITS

Cost-effective solution for digital audio distribution eliminating thousands of feet of copper wiring

The system can be easily reconfigured without a complex computer-based interface

Simplified splits for secondary locations

into an AN-16SBR System Bridge. One Cat-5 cable carries all 64 channels to a second AN-16SBR at FOH.

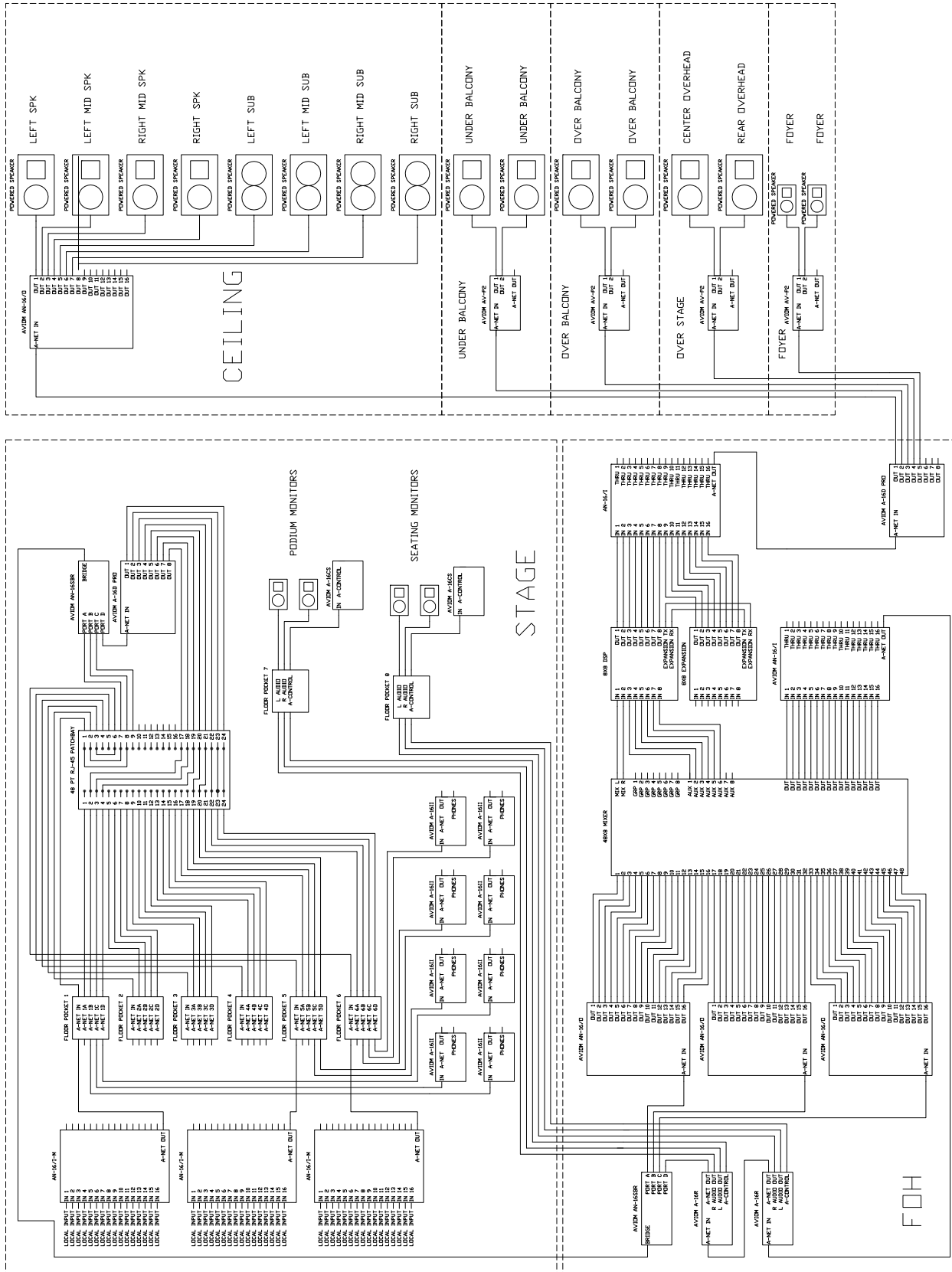
At FOH three AN-16/o Output Modules are connected to the console for the outputs from stage. There are also two AN-16/i Input Modules at FOH. One AN-16/i is used for monitor returns, sent to two A-16R Personal Mixers (for podium and seating area wedge monitors), and then to stage via the AN-16SBR. A-16CS Control Surfaces on stage provide remote control of the A-16R mixers.

Another advantage to using the Pro16 digital snake is the ability to create unlimited lossless splits to multiple output locations throughout the facility. A second input module at FOH is used to distribute 16 processed returns to main and fill speakers throughout the sanctuary and lobby. An AN-16/o Output Module feeds the main speaker cluster, while AV-P2 Output Modules feed powered speakers in the balcony, under the balcony, and in the lobby.

Christ says, "The audio fidelity of the Aviom system is really pretty incredible. I can tell no discernible difference between the Aviom digital mic inputs and those from an analog system."

System diagram on reverse

Case Study



The Pro16® system allows Revival Tabernacle to combine a basic 48-input digital snake with an Aviom personal mixing system and an audio distribution solution for the entire facility. Floor pockets on stage support simple re-configuration from week to week without requiring system operators to reprogram any devices.